

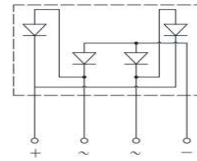
Low V_F Bridge Rectifier 600V Current 25A

FEATURES AND BENEFITS

- Low V_F
- High forward surge current capability
- Ideal for printed circuit boards
- Lead free in compliance with EU RohS2.0

MECHANICAL DATA

- Epoxy: UL94 V-0 rated flame retardant
- Case: GBJ Package
- Terminals: Tin plated leads, solderable per J-STD-002 and JESD22-B102
- Weight:



Primary Characteristic	
I_o	25A
V_{RRM}	600V
I_{FSM}	300A
V_F Typical= $12.5A$ $T_J = 125^\circ C$	0.76V
T_{jmax}	150°C

Maximum Ratings ($T_a=25^\circ C$ unless otherwise specified)			
Characteristics	Symbol	Value	Unit
Peak Repetitive Reverse Voltage	V_{RRM}	600	V
Working Peak Reverse Voltage	V_{RWM}	600	V
DC Blocking Voltage	V_{DC}	600	V
RMS Reverse Voltage	V_{RMS}	420	V
Maximum Average Forward Current	$I_{F(AV)}$	25	Amps
Peak Forward Surge Current, 8.3 ms Single Half Sine-wave Superimposed on Rated Load @ $T_a=25^\circ C$	I_{FSM}	300	Amps

Electrical Characteristics ($T_a=25^\circ C$ unless otherwise specified)						
Characteristics			Symbol	Typ.	Max.	Unit
Forward Voltage Drop ⁽¹⁾	$I_F=1A$	$T_a=25^\circ C$	V_F	0.75		V
	$I_F=12.5A$	$T_a=25^\circ C$	V_F	0.85	0.92	V
	$I_F=1A$	$T_a=125^\circ C$	V_F	0.58		V
	$I_F=12.5A$	$T_a=125^\circ C$	V_F	0.76		V
Reverse Current ⁽²⁾	$V_R=600V$	$T_a=25^\circ C$	I_R	0.05	10	μA
	$V_R=600V$	$T_a=125^\circ C$	I_R		500	μA

Notes (1): Pulse test: 300 μs pulse width, 1% duty cycle,

Notes (2): Pulse width $\leq 40ms$

THERMAL CHARACTERISTICS ($T_A = 25^\circ C$ unless otherwise noted)			
Characteristics	Symbol	Value	Unit
Typical Thermal Resistance, junction to Lead	$R_{\theta JC}$	1.5	$^\circ C/W$
Operating Temperature Range (in DC Mode)	T_J	-65 to +150	$^\circ C$
Storage Temperature Range	T_{STG}	-65 to +150	$^\circ C$

Notes (3): FR-4 PCB, 2oz copper. Minimum recommended pad layout

RATINGS AND CHARACTERISTICS CURVES

Fig 1. Typical Forward Characteristics

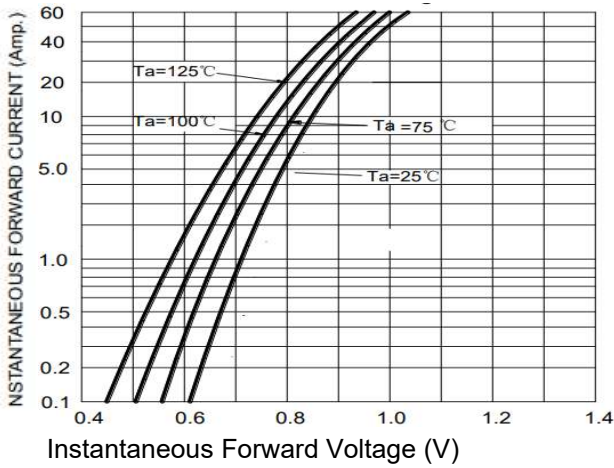


Fig 2. Typical Reverse Characteristics

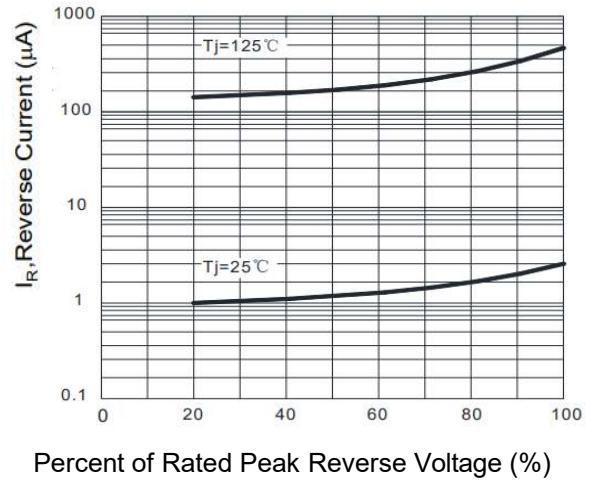


Fig 3. Forward Current Derating Curve

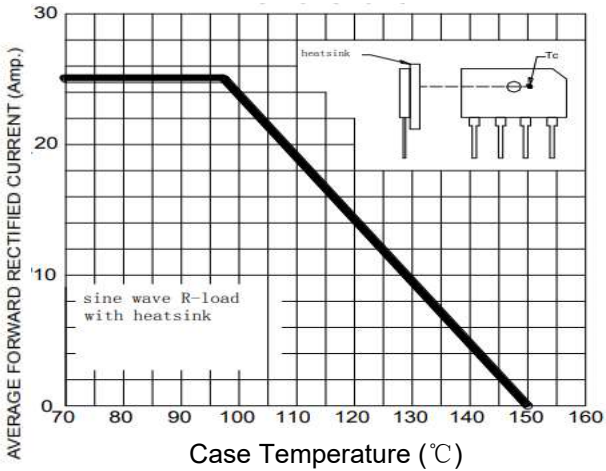
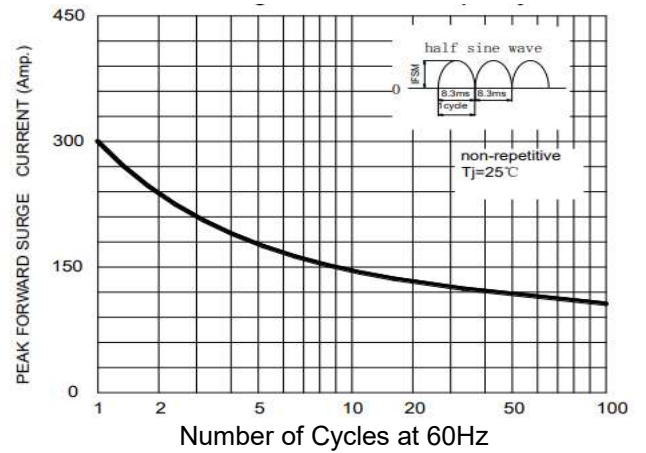
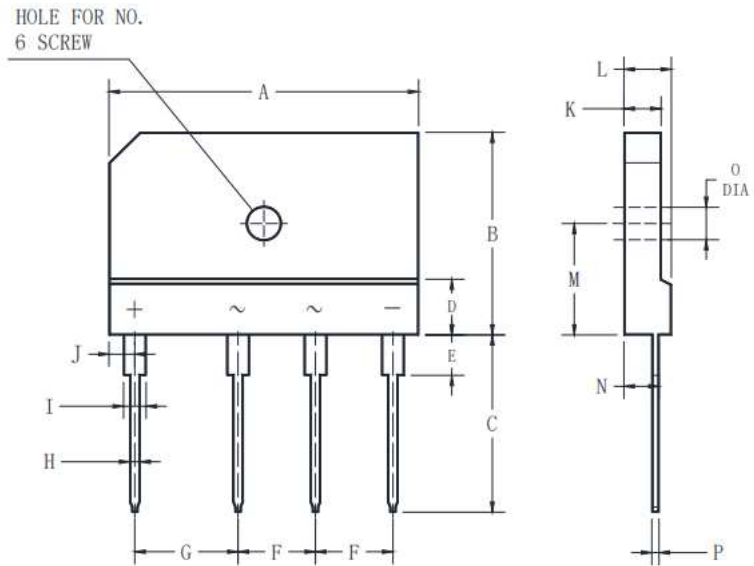


Fig 4. Non-repetitive Forward Surge Current



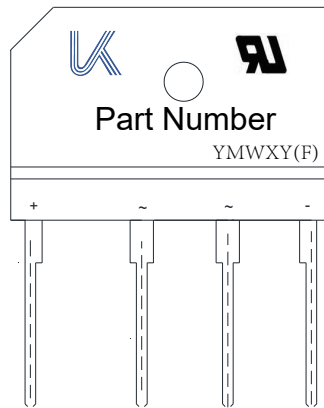
Package Outline Dimensions (in millimeters)

Dim	GBJ	
	Min	Max
A	29.7	30.3
B	19.7	20.3
C	17.0	18.0
D	4.8	5.8
E	3.8	4.2
F	7.3	7.7
G	9.8	10.2
H	0.9	1.1
I	2.0	2.4
J	2.3	2.7
K	3.4	3.8
L	4.4	4.8
M	10.8	11.2
N	3.1	3.7
O	3.1	3.4
P	0.6	0.8



Marking Information

Series Name 康虹=
Part Number Marking Code=



=Product Tracking Code